



SCHNITZLER INDUSTRIAL SOLUTIONS
...we make pumps intelligent



Innovative Dry-running Protection

DRP-075-PE

Vacuum-controlled pump stop

Dry-running protection for air pumps

The innovative DRP-075-PE* dry-running protection is the ideal solution for the effective protection of pneumatic pumps.

Its vacuum-controlled shut-off within the suction line ensures that the pump switches off immediately as soon as there is no more vacuum. This not only protects the membranes, but also significantly reduces energy costs relating to compressed air. Made of high-quality materials, the DRP-075-PE is highly resistant to chemical substances and is therefore perfectly designed for use in various industrial sectors such as the chemical, food and pharmaceutical industries.

*other material on request

Wide range of applications

Advantages

- Extends the lifetime of the membrane and piston sealings
- Automatic pump shutdown
- Reduction of air consumption
- Dry-running protection
- No use of electricity or sensors

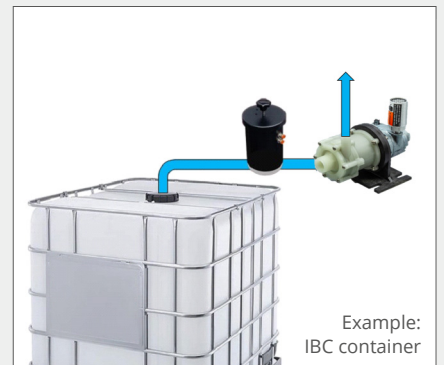
With diaphragm pumps



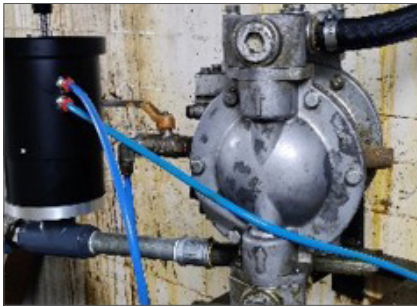
With short piston pumps



With centrifugal pumps



Use in the practice



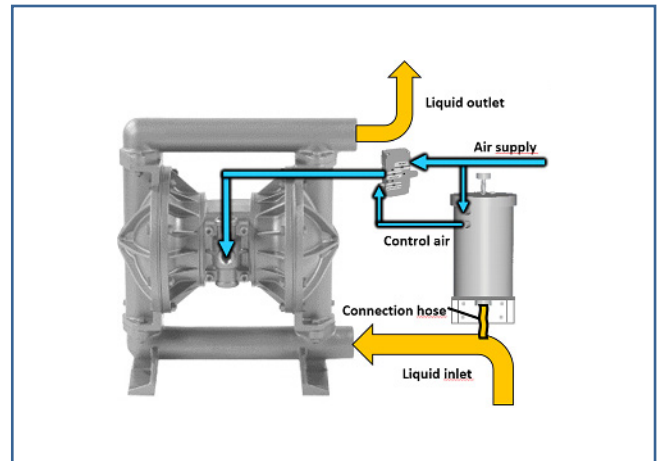
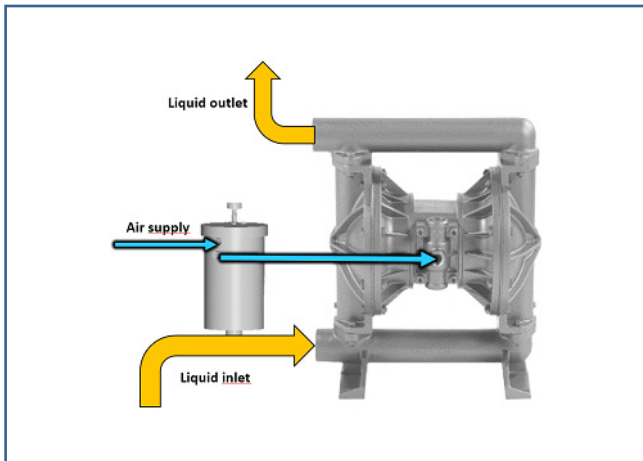
The dry-running protection is extremely simple and flexible to use and can therefore be used in all areas of pneumatic fluid transfer.

Flexible connection

The dry-running protection can be used in combination with big and even small pumps.



Installation samples



The benefits over all

- Chemical resistance
- Simple design/installation
- Including pump reset button
- Reliable operation
- Compact design
- ATEX compliant (declaration on request)
- Suitable for pneumatic pumps of all sizes

Technical details

DRP-075-PE

General specification

Operating vacuum	0,2 - 0,95 bar
Connection suction side	1/2" BSP
Connection air hose	8 mm
Max capacity o fair valve	400 l / min.
Max. air pressure	10 bar
Max. temperature	95° Celsius

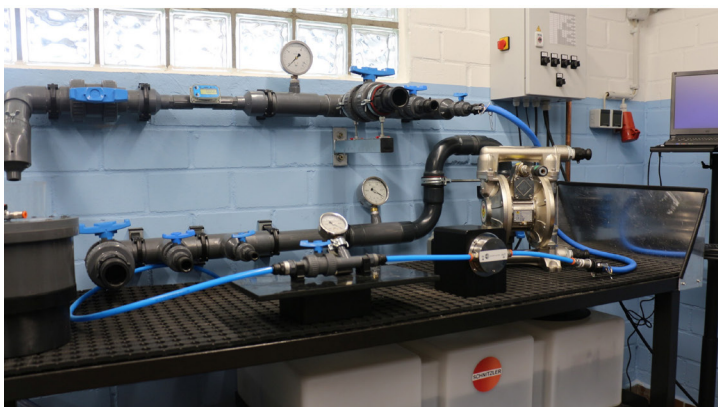
Wetted components

Flexible valve sealing	PE
Vacuum body	conductive PE

Dimensions and weight

Max. height	280 mm
Diameter	160 mm
Weight	2 Kg

Come and visit us in our pump workshop



... or on YouTube at <https://www.youtube.com/@schnittlergmbh8723>

 **SCHNITZLER INDUSTRIAL SOLUTIONS** is a division of:



Schnitzler GmbH
Höfgeshofweg 26
D-47807 Krefeld-Fischeln
Phone: +49 2151 82865 / Fax: +49 2151 313111
www.schnitzler.de / info@schnitzler.de

